

Landsborough to Nambour

Rail Corridor Study

September 2008

Improving the Mooloolah River crossing

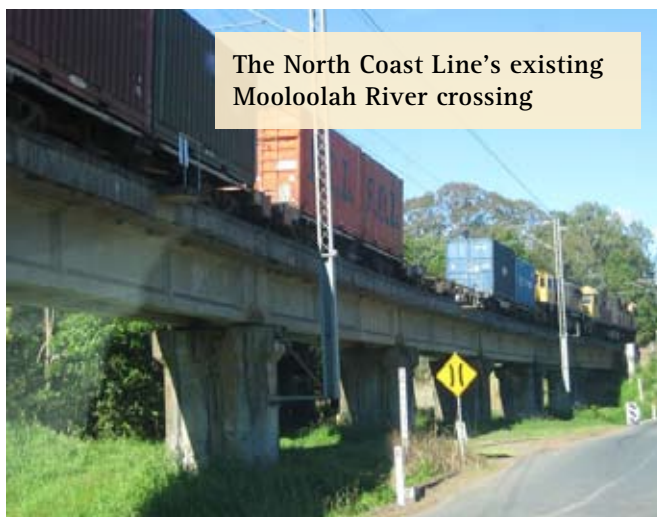
The Mooloolah River is recognised by the State Government as an environmentally sensitive area with habitat for significant species. Feedback since the commencement of the Landsborough to Nambour Rail Corridor Study has also highlighted the significance of the Mooloolah River for the local community.

In order to minimise the impact of the future rail upgrade on this area, the Route Identification Report and the April study update stated that the study team would be seeking to improve the rail crossing in this sensitive area.

The refinement of the preferred route is shown in the map below.

Improvements to the Mooloolah River crossing include:

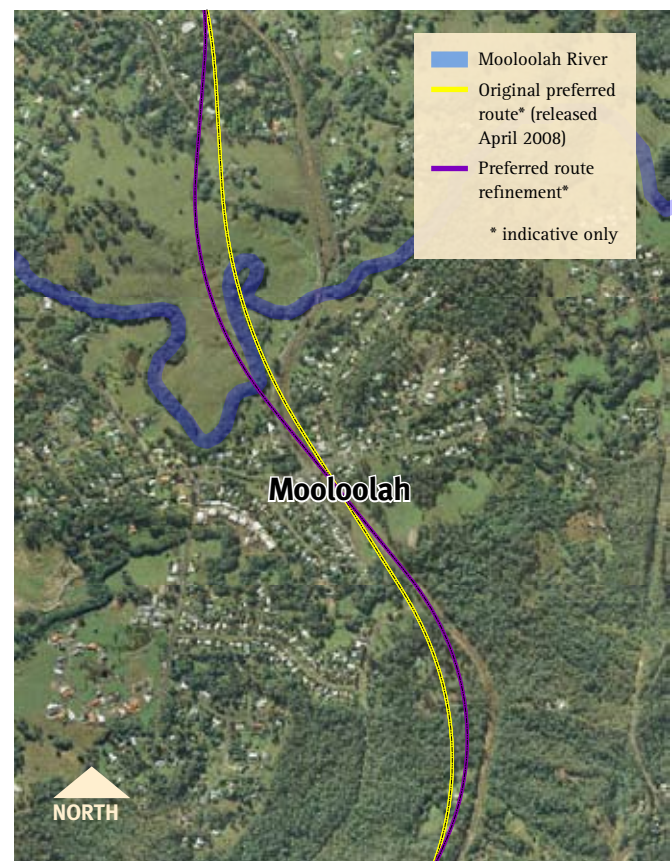
- crossing the river at a better angle
- reducing the need to remove or disturb vegetation and habitats on the banks of the river
- using environmentally sensitive design for bridge structures.



The North Coast Line's existing Mooloolah River crossing

By moving the preferred route slightly to the west in the vicinity of the Mooloolah River and planning for bridging structures that minimise the need for the clearing of vegetation, the study team has significantly reduced the environmental impact of the future rail corridor in this area.

Landowners with property affected by the refined preferred route have been notified of the changes.



Mooloolah

NORTH

For more information about the Landsborough to Nambour Rail Corridor Study, contact the study team:

Phone: 1800 221 991 (free call from landlines, charges apply for mobile phones)

Email: railstudy@landsborough-nambour.com.au

Web: www.landsborough-nambour.com.au

Post: Reply Paid 4628, Sunshine Coast MC, QLD, 4560