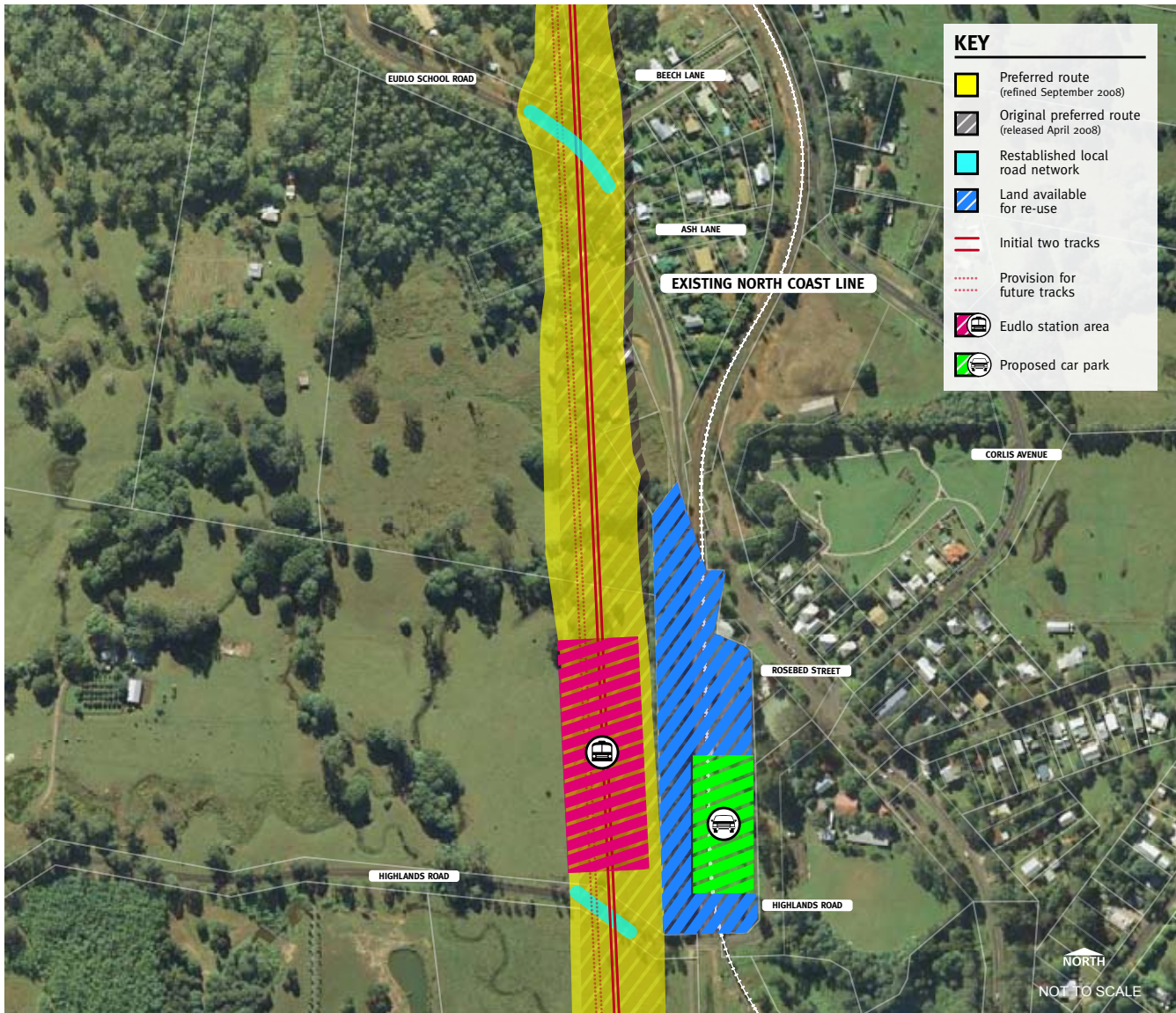


Landsborough to Nambour

# Rail Corridor Study

September 2008

## Eudlo



### Description

The study team has developed a single option for consideration by the local community.

- station located west of the current station
- road bridge constructed over railway at Eudlo School Road
- road underpass constructed under railway at Highlands Road.

### Opportunities

- use redundant rail land for alternative purposes
- incorporate landscaping and open space around the new station
- either realign the existing station access road or build a new road connection to the station.

For more information about the Landsborough to Nambour Rail Corridor Study, contact the study team:

**Phone:** 1800 221 991 (free call from landlines, charges apply for mobile phones)

**Email:** [railstudy@landsborough-nambour.com.au](mailto:railstudy@landsborough-nambour.com.au)

**Web:** [www.landsborough-nambour.com.au](http://www.landsborough-nambour.com.au)

**Post:** Reply Paid 4628, Sunshine Coast MC, QLD, 4560