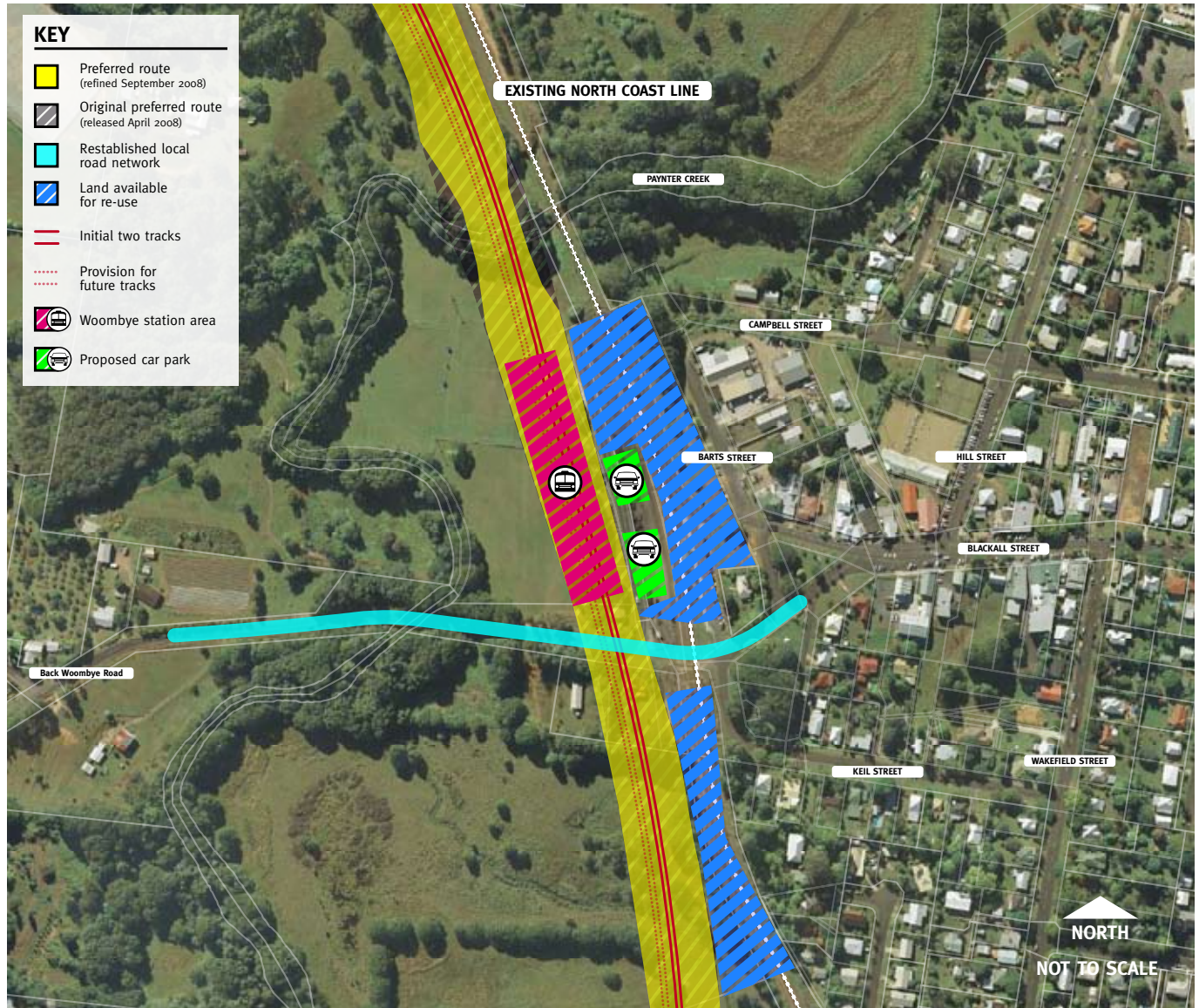


Landsborough to Nambour

Rail Corridor Study

September 2008

Woombye



Description

The study team has developed a single option for Woombye for consideration by the local community.

- road overpass extending Blackall Street to Back Woombye Road
- closes road underpass to the north of the existing station

- station located west of the existing station
- car park located on the eastern side of the new station.

Opportunities

- use redundant rail land for alternative purposes
- potential to relocate the sports fields onto this land.

For more information about the Landsborough to Nambour Rail Corridor Study, contact the study team:

Phone: 1800 221 991 (free call from landlines, charges apply for mobile phones)

Email: railstudy@landsborough-nambour.com.au

Web: www.landsborough-nambour.com.au

Post: Reply Paid 4628, Sunshine Coast MC, QLD, 4560