

Landsborough to Nambour

# Rail Corridor Study

July 2009

## Special management area Eudlo

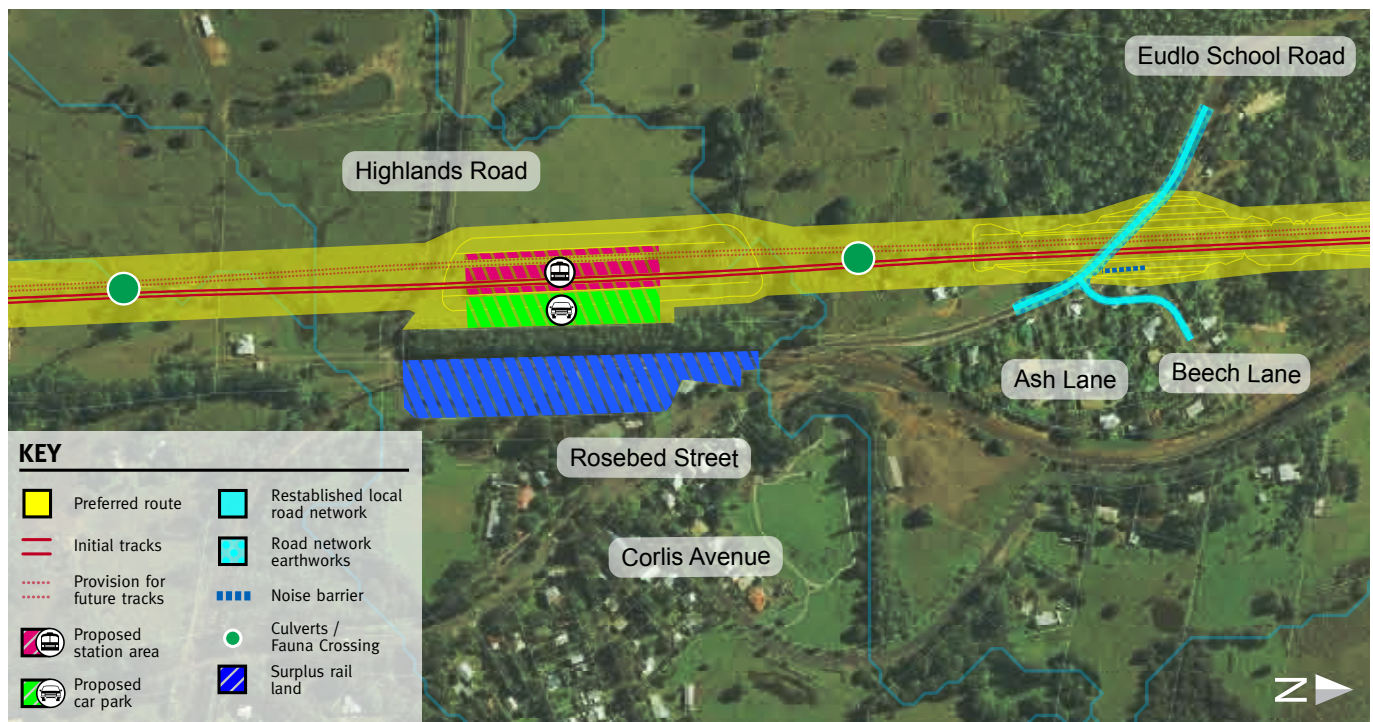
A number of key issues for the Eudlo township were identified through feedback gathered during the options consultation phase. These include:

- Maintaining safe and secure access to the new station given it is further from the township.
- Minimising impacts on the re-vegetated Federation Walk area.
- Designing the station to fit with the historic context of the township.

The road and rail option for Eudlo has not changed since the options consultation phase, although community feedback has been taken into consideration for activities around the rail corridor. The option includes:

- a new station located approximately 90 metres to the west of the existing station
- a station car park located on the eastern side of the Federation Walk area
- clearing some trees in the Federation Walk area to provide safe and visible access to the station from the township
- re-vegetation of parts of surplus railway land to replace lost vegetation
- the new railway to pass over Highlands Road
- Eudlo School Road to pass over the railway.

The Department of Transport and Main Roads has identified a range of possible opportunities for the re-use of surplus rail corridor. These opportunities have been recommended to the Sunshine Coast Regional Council for consideration as part of the Council's master planning activities for townships along the proposed rail corridor.



Map shows the road and rail option developed for Eudlo.

For more information about the Landsborough to Nambour Rail Corridor Study, contact the study team:

Phone: 1800 221 991 (free call from landlines, charges may apply for mobile and pay phones)  
 Email: [railstudy@landsborough-nambour.com.au](mailto:railstudy@landsborough-nambour.com.au)  
 Web: [www.landsborough-nambour.com.au](http://www.landsborough-nambour.com.au)  
 Post: Reply Paid 4628, Sunshine Coast MC, QLD, 4560

## Special management actions for Eudlo

### Design

- Pedestrian access will be incorporated into the station design.
- Station design will be consistent with the context and scale of the railway township.

### Construction

- Some trees from the Federation Walk area will be cleared to maintain a physical and visual link between the station and the town.
- Construction impacts on traffic and current land uses will be minimal as the proposed location for the new station is to the west of the township.

### Operation

- There are no operational impacts in this area that will require mitigation.

### Decommissioning of surplus rail land

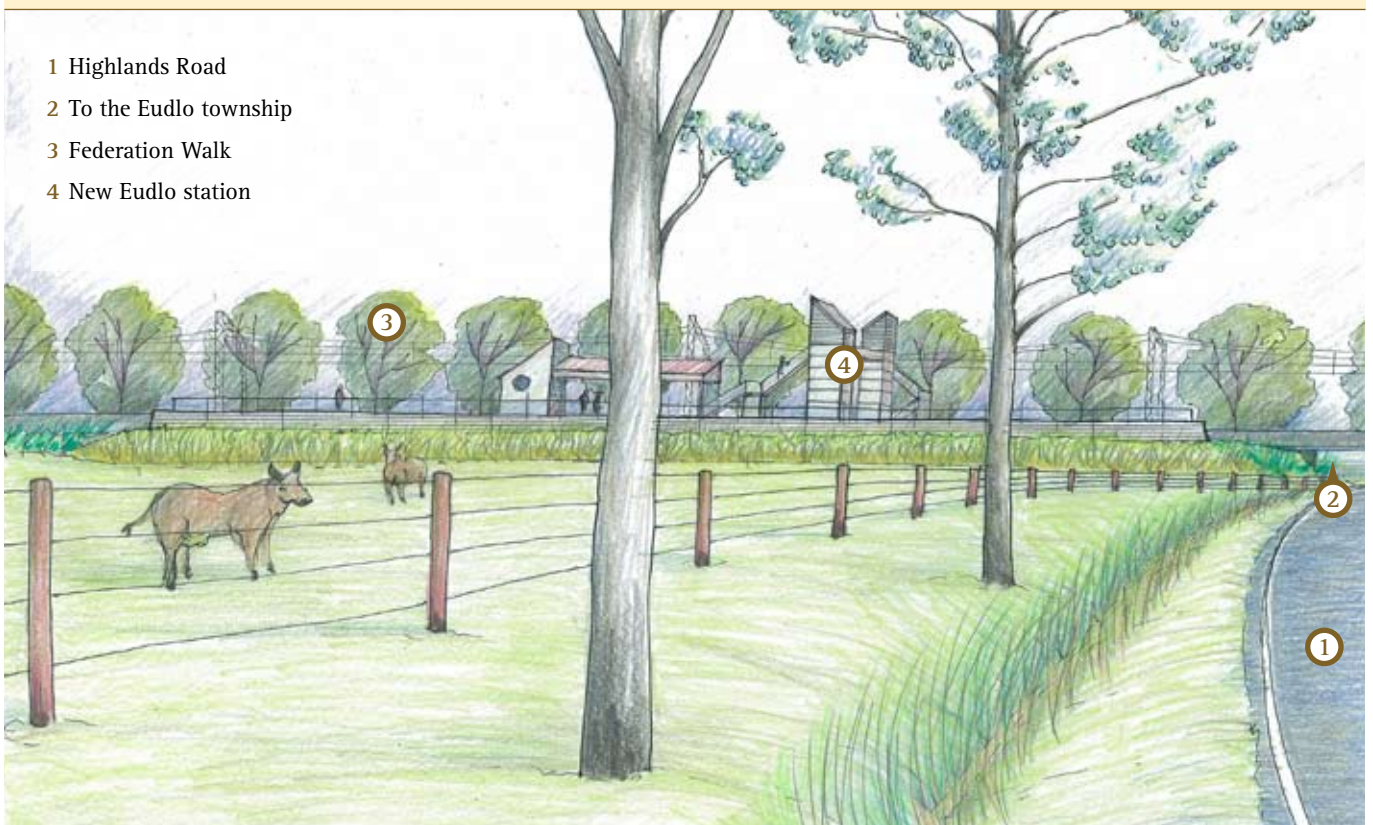
- Opportunities for the re-use of surplus rail land have been recommended to the Sunshine Coast Regional Council for consideration as part of Council's masterplanning activities for the railway towns.

### Before



### After

- 1 Highlands Road
- 2 To the Eudlo township
- 3 Federation Walk
- 4 New Eudlo station



Artist's impression of the view to the new Eudlo station area looking east from Highlands Road.