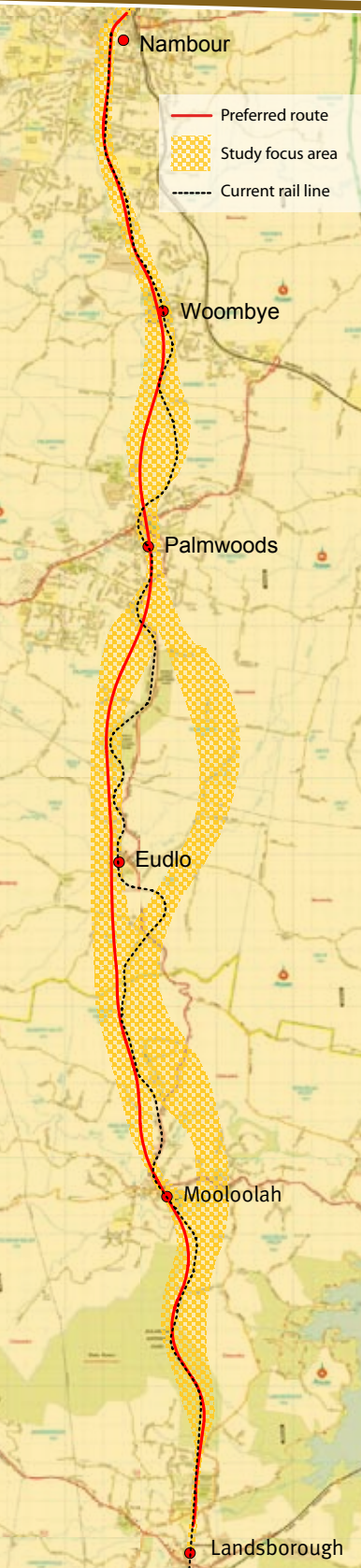


Landsborough to Nambour

Rail Corridor Study

April 2008



My property is affected by the preferred route - what happens now?

While preferred route for the Landsborough to Nambour Rail Corridor has now been identified, the route will continue to be refined and optimised by Queensland Transport in consultation with affected landowners and communities in the coming months.

If you own property that is affected by the preferred route:

- you are invited to contact the study team to arrange a meeting with a Queensland Transport property officer
- Queensland Transport has released a Route Identification Report that details the methods used to determine the preferred route, available on the study website or by contacting the study team
- maps showing property boundaries and the preferred route are available for download from the study website or by contacting the study team.

Queensland Transport is keen to develop a dialogue with affected landowners to discuss the requirements of the project, gain a better understanding of impact on individual landowners and determine the most appropriate acquisition process, if required, for each landowner.

For more information about the Landsborough to Nambour Rail Corridor Study, contact the study team:

Phone: 1800 221 991

Email: railstudy@landsborough-nambour.com.au

Web: www.landsborough-nambour.com.au

Post: Reply Paid 4628, Sunshine Coast MC, QLD, 4560

About the study

The Landsborough to Nambour Rail Corridor Study is an early phase of the Landsborough to Nambour Rail Project.

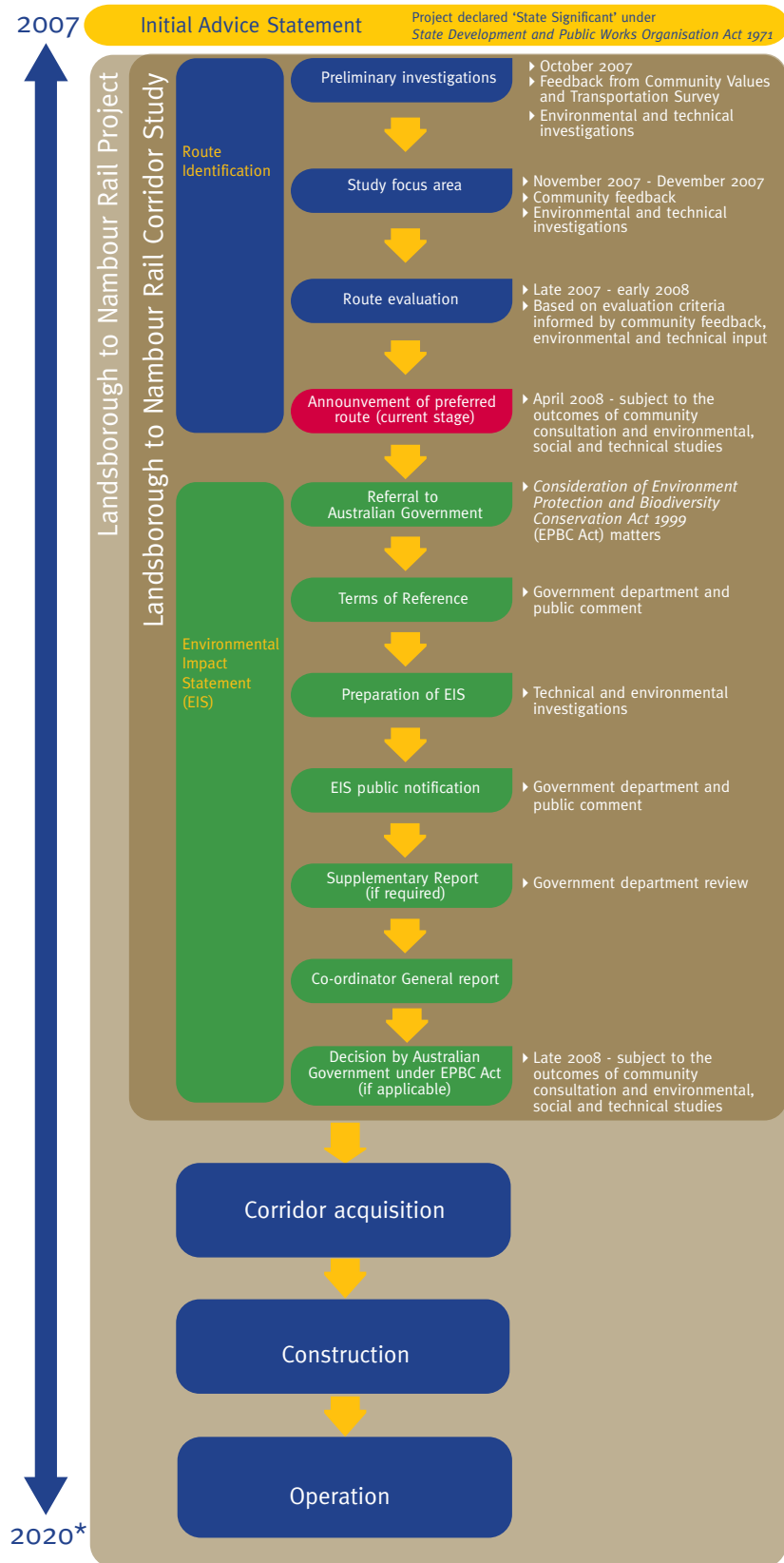
The Landsborough to Nambour Rail Project will include construction of a double-track railway along a predominantly new route, with room for extra tracks if required.

The project will improve the efficiency, service frequency, operating speeds and reliability of trains, and cater for the increasing demand for rail services in the corridor caused by population and freight transport growth.

The study is a significant, long-term planning project that will allow for a greater level of certainty around the future development and land use of the areas surrounding the North Coast Line.

By identifying the corridor now, Queensland Transport is providing for the future needs of both rail users and the communities that surround the corridor.

Landsborough to Nambour Project Timeline



*Based on SEQIPP 2007 - 2026

For more information about the Landsborough to Nambour Rail Corridor Study, contact the study team:

Phone: 1800 221 991

Email: railstudy@landsborough-nambour.com.au

Web: www.landsborough-nambour.com.au

Post: Reply Paid 4628, Sunshine Coast MC, QLD, 4560



Queensland Government
Queensland Transport