

Rail Corridor Study

April 2008

Community Consultation Outcomes

Following the release of the study focus area, the study team held information sessions in each of the six townships within the study focus area. These sessions gave the community the opportunity to speak to members of the study team and provide feedback on their properties and issues that concern them in relation to the study.

Key issues highlighted in written submissions

The study team received 456 written submissions, 54% from respondents living within the study focus area, and the balance submitted by government agencies, the broader community and businesses in the region. Key issues addressed by the written submissions are outlined below.

Eudlo and Mooloolah stations

- removing/relocating the rail station is of high concern to each community
- concern for their historical and cultural heritage, potential change in the level of public transport services and the overall effect on townships
- current locations of both stations seen as suitable and easily accessible, with the townships already centred around these facilities.

Eastern/western options

- many submissions favoured the western option, following the existing rail line's location
- the eastern option highlighted issues including - greater number of flood-prone areas, significant ecological areas, more open space with the potential for increased noise levels and greater property impacts
- submissions in favour of the eastern option stated that this option consists of degradable land, unviable farming areas and fewer property impacts.

Environmental concerns

- areas of high ecological significance including Dularcha National Park, bushland south of Eudlo, Eudlo Creek National Park and aquatic ecosystems within these areas such as Mooloolah and South Mooloolah River should either be avoided or sensitive design incorporated in all aspects
- concerns of property owners include a perceived decrease of local and regional biological diversity and increased flooding.



For more information about the Landsborough to Nambour Rail Corridor Study, contact the study team:

Phone: 1800 221 991

Email: railstudy@landsborough-nambour.com.au

Web: www.landsborough-nambour.com.au

Post: Reply Paid 4628, Sunshine Coast MC, QLD, 4560

About the study

The Landsborough to Nambour Rail Corridor Study is an early phase of the Landsborough to Nambour Rail Project.

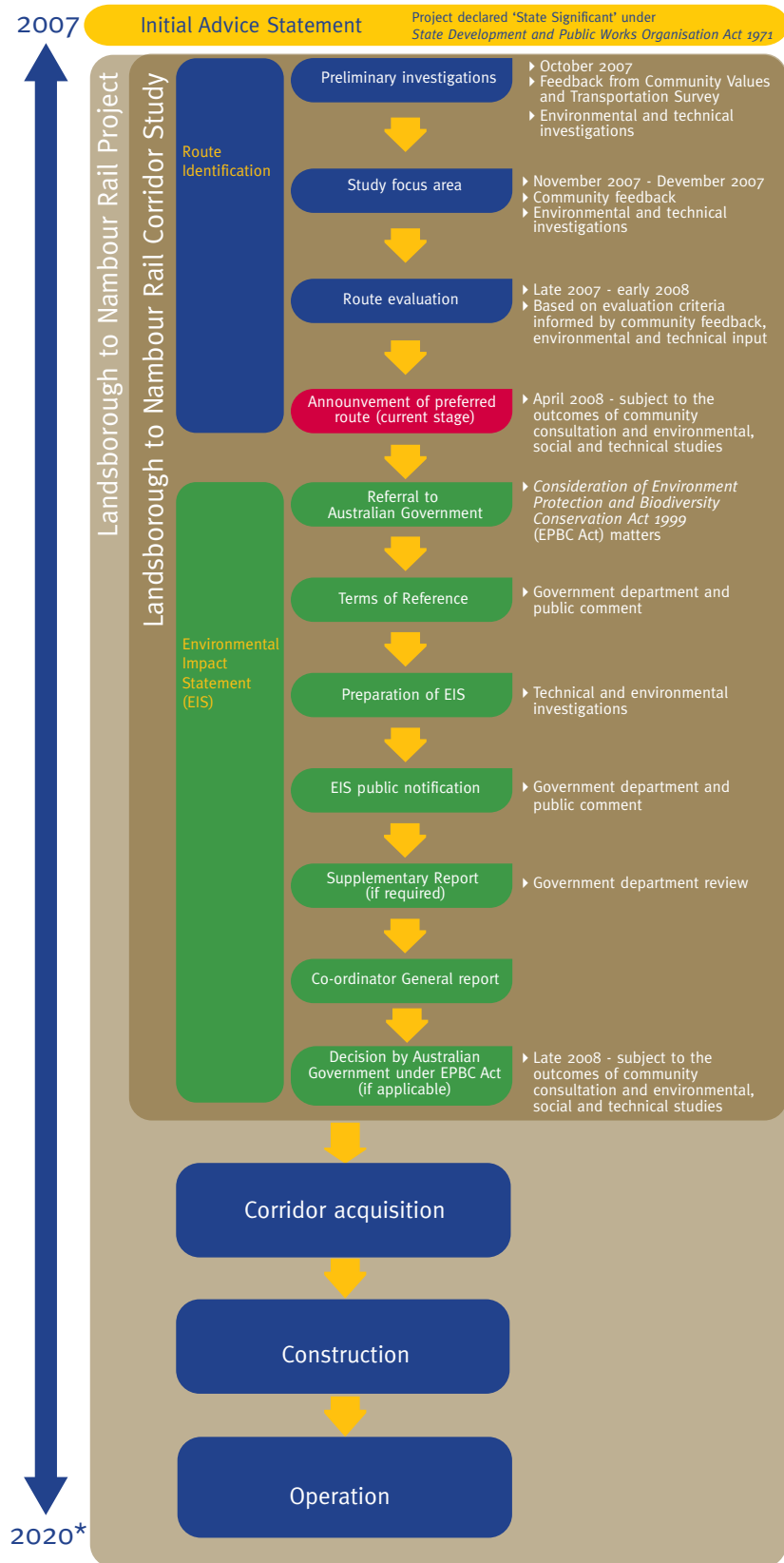
The Landsborough to Nambour Rail Project will include construction of a double-track railway along a predominantly new route, with room for extra tracks if required.

The project will improve the efficiency, service frequency, operating speeds and reliability of trains, and cater for the increasing demand for rail services in the corridor caused by population and freight transport growth.

The study is a significant, long-term planning project that will allow for a greater level of certainty around the future development and land use of the areas surrounding the North Coast Line.

By identifying the corridor now, Queensland Transport is providing for the future needs of both rail users and the communities that surround the corridor.

Landsborough to Nambour Project Timeline



*Based on SEQIPP 2007 - 2026

For more information about the Landsborough to Nambour Rail Corridor Study, contact the study team:

Phone: 1800 221 991

Email: railstudy@landsborough-nambour.com.au

Web: www.landsborough-nambour.com.au

Post: Reply Paid 4628, Sunshine Coast MC, QLD, 4560



Queensland Government
Queensland Transport